

V3D² & V3D¹ X-CEL

Imaging Wheel
Alignment Systems



High resolution imaging
technology delivers speed
and accuracy

JohnBean™

V3D² & V3D¹ X-CEL FULLY FEATURED, HIGHLY ACCURATE WHEEL ALIGNMENT SYSTEMS



VERSATILE, ACCURATE HARDWARE

- High resolution cameras produce accurate, live alignment readings and diagnostic data
- Passive front and rear targets improve durability with no electronics to damage
- Advanced targets and clamps are lightweight, durable and impact resistant

ADVANCED DIMENSIONING*

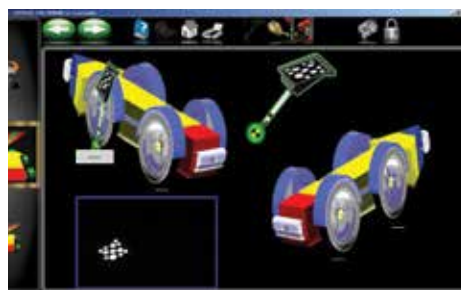
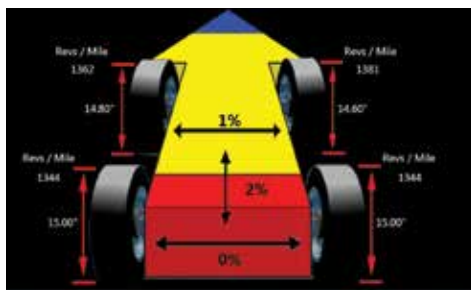
- Cross-diagonal* measurements identify frame or structural damage
- Rolling Radius* identifies mismatched tire sizes - a potential cause of vehicle pulling and driver complaints

*Patented and/or Patent-Pending Features



The V3D² & V3D¹ X-CEL Wheel Alignment Systems are some of the most advanced on the market today

Patented imaging technology provides accurate and real-time measurements that improves productivity. User friendly features such as EZ-TOE*, VODI* and an extensive vehicle specification database delivers customer satisfaction, ease of use and accuracy.



AVAILABLE WITH THE JOHN BEAN AC400 TOUCHLESS ALIGNMENT WHEEL CLAMP



SECURE CLAMPING WITHOUT TOUCHING THE RIM

- Only the tire is contacted
- Clutch limited clamping force ensures accurate and repeatable results
- Durable and lightweight magnesium construction

FAST AND EASY TO USE

- Clamping is accomplished with a single fast-action adjustment knob
- No accessories needed to accommodate the full range of tire sizes
- Large, comfortable handle allows ergonomic use

RIDE HEIGHT* MEASUREMENT

Measure ride height and obtain proper alignment specs for those vehicles requiring it

EZ-TOE*

Turn the front wheels and access difficult adjustment points while still displaying centered toe readings

USER-FRIENDLY INTERFACE

Use available step-by-step instructions as a guide for completing even the most complex tasks

MANUFACTURER SPECS

Extensive OEM specs allow quick and accurate vehicle selection

VODI™

Vehicle Orientation Directional Indicator* - guides the technician through the measurement process

HELP VIDEOS

View detailed videos of how to make needed adjustments to complete even the most complex tasks

*Patented and/or Patent-Pending Features

JohnBean™

PRODUCT FEATURES & SPECIFICATIONS

STANDARD ACCESSORIES

- Wheel clamps & targets
- Steering wheel holder:
00055502000
- Brake pedal depressor:
00000096000

ACCESSORIES INCLUDED WITH THE V3D² X-CEL

- Ride height target kit:
EAK0256J71A

OPTIONAL ACCESSORIES

- EZ-Stream™*: EAK0284B10A1
- VIN code reader: EAK0289J86B
- AC200 Alloy quick clamp kit:
EAK0268J63A
- Drive-on camera aid: EAK0289J91A
- Hub adapter kit for wheels-off
alignment: EAK0222J83B
- AC200 Universal wheel clamp
extension kit: EAK0268J62A
- Fixed-height camera support:
EAA0321J01A
- Variable-height camera support:
EAA0321J19C
- Electronic-tilt camera support kit:
EAK0289J79A

EEWA546B - WITH AC400 CLAMPS
EEWA546P4 - WITH UNIVERSAL CLAMPS
John Bean V3D² X-CEL

EEWA545B - WITH AC400 CLAMPS
EEWA545P4 - WITH UNIVERSAL CLAMPS
John Bean V3D¹ X-CEL



SPECIFICATIONS

Equipment Specifications

- Wheel size: 13" - 24"
(33cm - 61cm)
- Tire diameter: Unlimited
- Track width: 48" - 96"
(122cm - 244cm)
- Wheel Base: 79" - 180"
(201cm - 457cm)
- Printer: Included
- Shipping weights:
V3D¹ - 445 lbs (202kg)
V3D² - 493 lbs (224kg)
- Power requirements:
120/230V 1Ph 50/60Hz

AC400 Specifications

- Tire diameter: 19" to 39"
(48.3 cm to 99.1 cm)
- Weight: 7 lbs (3.2 kg)
- Clamping force:
37 lbs (164.6 N)
- Construction:
Cast magnesium

V3D² X-CEL Exclusive Features

- Larger flat panel monitor
- Advanced Dimensioning*
- iSHOP connectivity
- Manageable customer database

*Patented and/or Patent-Pending Features

John Bean is committed to product innovation and improvement. Therefore, specifications listed in this brochure may change without notice. © 2012 Snap-on Incorporated. John Bean is a trademark of Snap-on Incorporated. All rights reserved. All other marks are marks of their respective holders.

05/13 SS2829N

For more information regarding the V3D¹ or V3D² X-CEL
Call 800.362.4618 (US) or 800.362.4608 (Canada)

www.johnbean.com

www.johnbean.ca

JohnBean™